

OSCAR

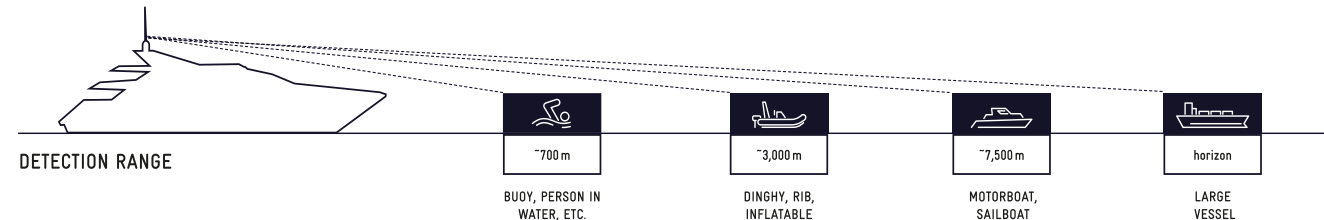
smart vision safe navigation

Sentry

Quick User Guide

OSCAR Sentry

OSCAR Sentry Specifications	
Thermal Camera Long Range	Boson® 640 x 512px , 8° HFOV , 50 mm lens
Thermal Camera Close Range	Boson® 640 x 512px , 32° HFOV, 14 mm lens
Lowlight Camera Long Range	2560x1944px, 34° HFOV , 8 mm lens
Lowlight Camera Close Range	2560x1944px, 8° HFOV, 35 mm lens
Pan , Tilit	360° , +/- 20°
Interface Compatibility	Ipad, Windows, Mac, Linux
4 Sentry Modes	<ul style="list-style-type: none"> - Collision Avoidance Mode - 360° Surveillance Mode - Manual Mode - Target Tracking (feature coming soon)




Start up OSCAR Sentry

Note:

Sentry can be accessed from any PC or Tablet which meets the minimum hardware requirements and is connected to the same network via oscar.local/

Using the application is possible for one device at the same time. If another device is connected to Sentry a "Connection Busy" message will appear.

Start up:

- Switch power on for PC, OSCAR Sentry unit and wifi router
- Start up of all devices can take up to 5 min!
- Open OSCAR Sentry application in the web browser by clicking on the OSCAR Icon on the desktop:  or open webbrowser (google Chrome recommended) and enter oscar.local/ in the URL bar

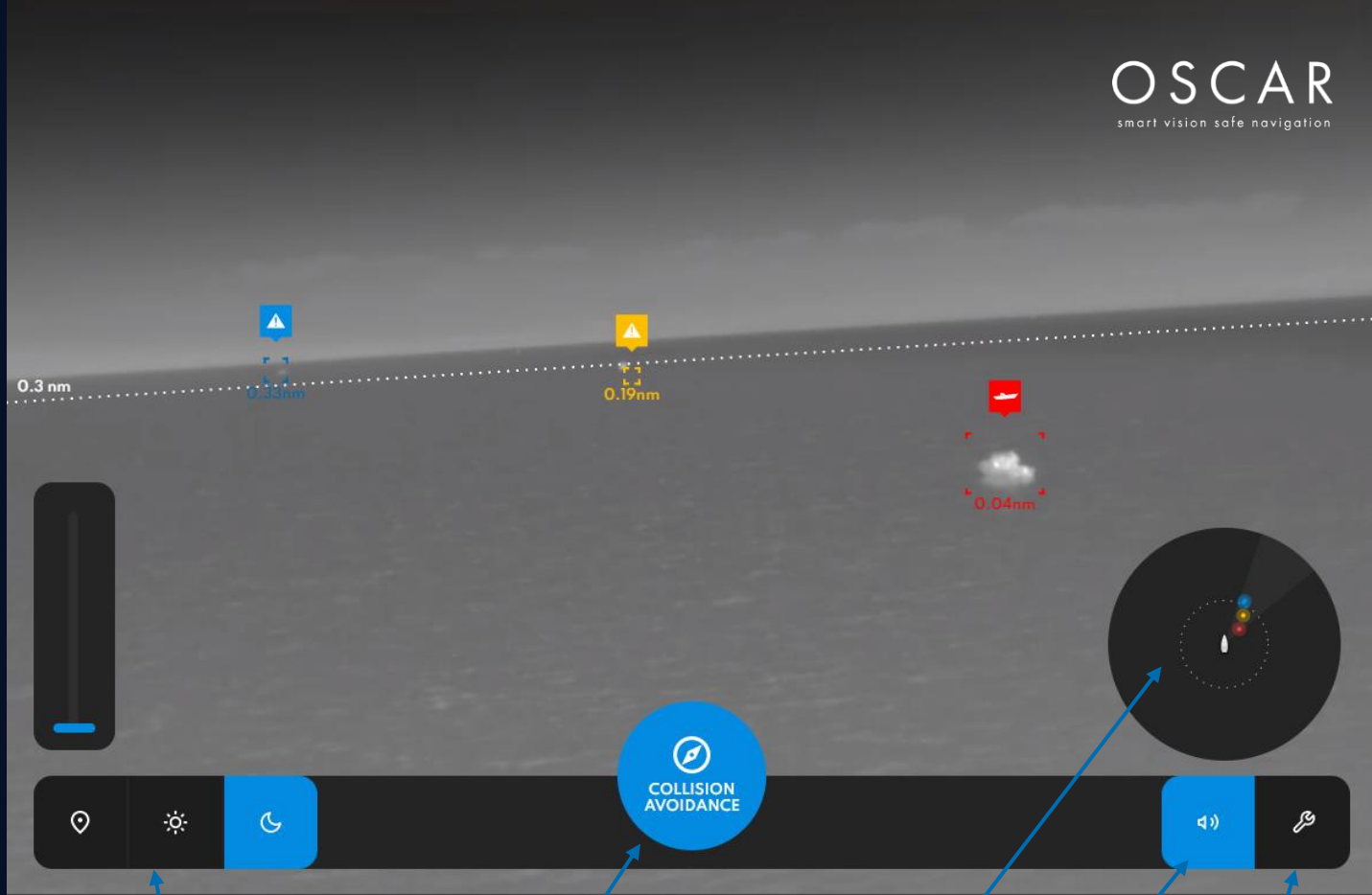
Troubleshooting:

- *After restarting or powering on the system, please wait around 5 minutes before attempting to connect the application, to ensure both OSCAR Sentry camera and Wi-Fi router are properly restarted*
- *Check connections between OSCAR Sentry and Wi-Fi router*
- *Check power connections*

App UI Overview

Bottom navigation bar to switch camera views, Map view, select between sentry modes mute alarms and changes settings.

Note: The mini map shows an overview of all detected targets. The colors are indicating the threat level.



Camera and
Map view

Change Sentry modes

Mini Map

Mute

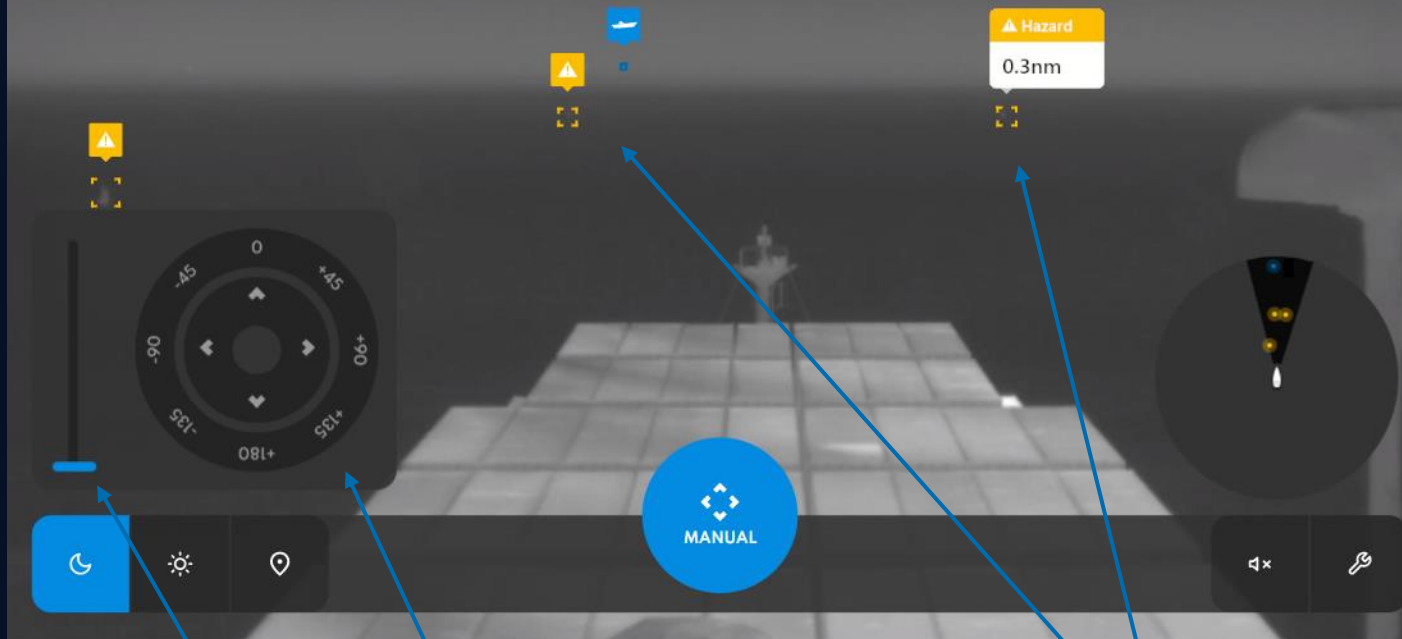
Settings

App UI Overview

With the zoom bar the digital zoom level can be set. If the selected zoom level reaches the level of the long range camera the picture automatically switch to the 2nd thermal camera.

In Manual Mode the camera can be controlled with the Pan & Tilt buttons.

Note: The cone in the mini map indicates the panning position relative to the boat.



Zoom Bar

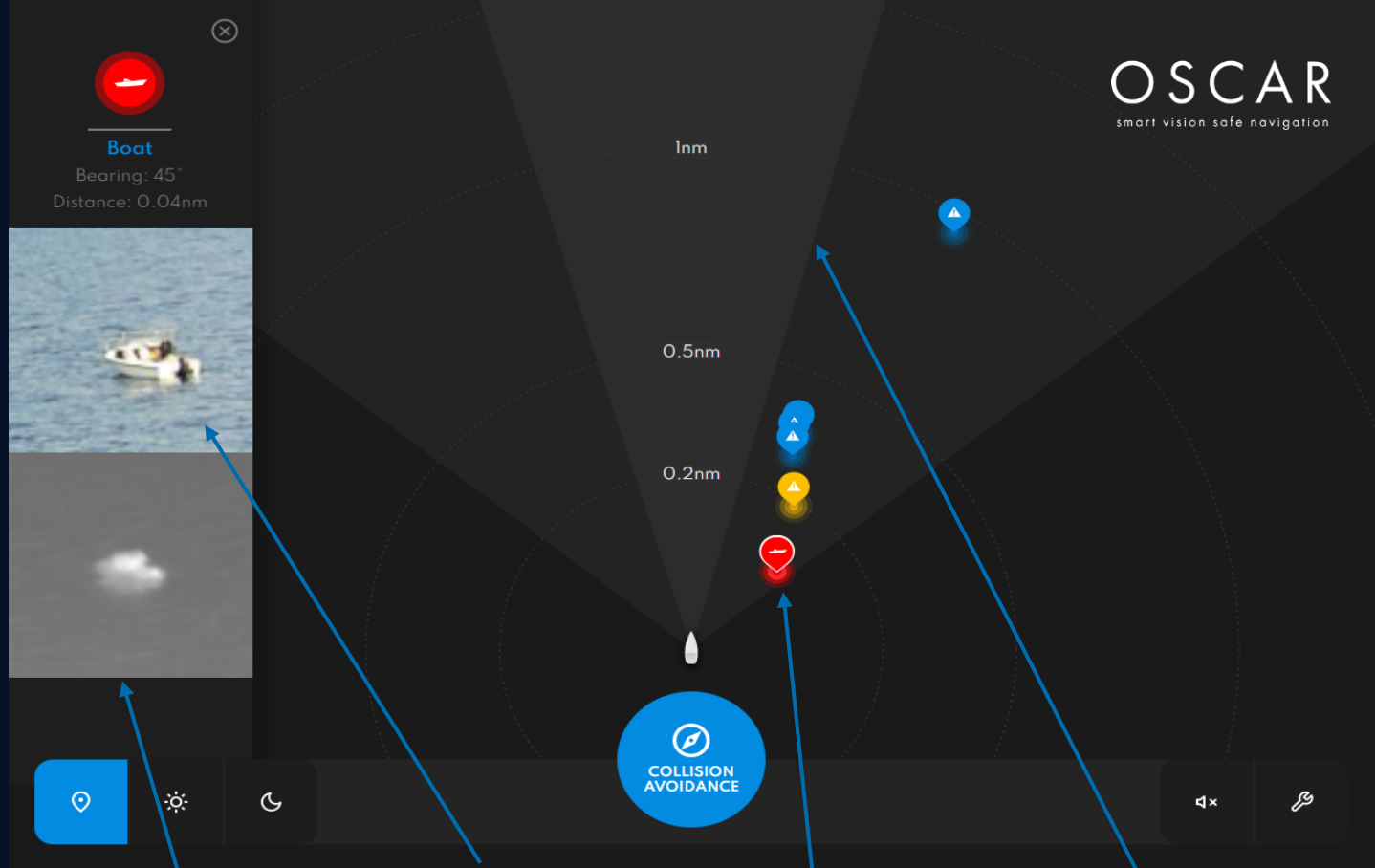
Pan & Tilt

Detections

OSCAR Map

All detected Targets are shown in the OSCAR Map. All objects are classified on 3 threat levels as configured on the alarm settings. Blue, yellow and red. By clicking on a specific target further information will be displayed (e.g. Classification, bearing, distance, and images of the selected object)

Note: The images of every object are updated continuously if the object appears in the cameras FOV (field of view).



Last thermal image of selected target

Last color image of selected target

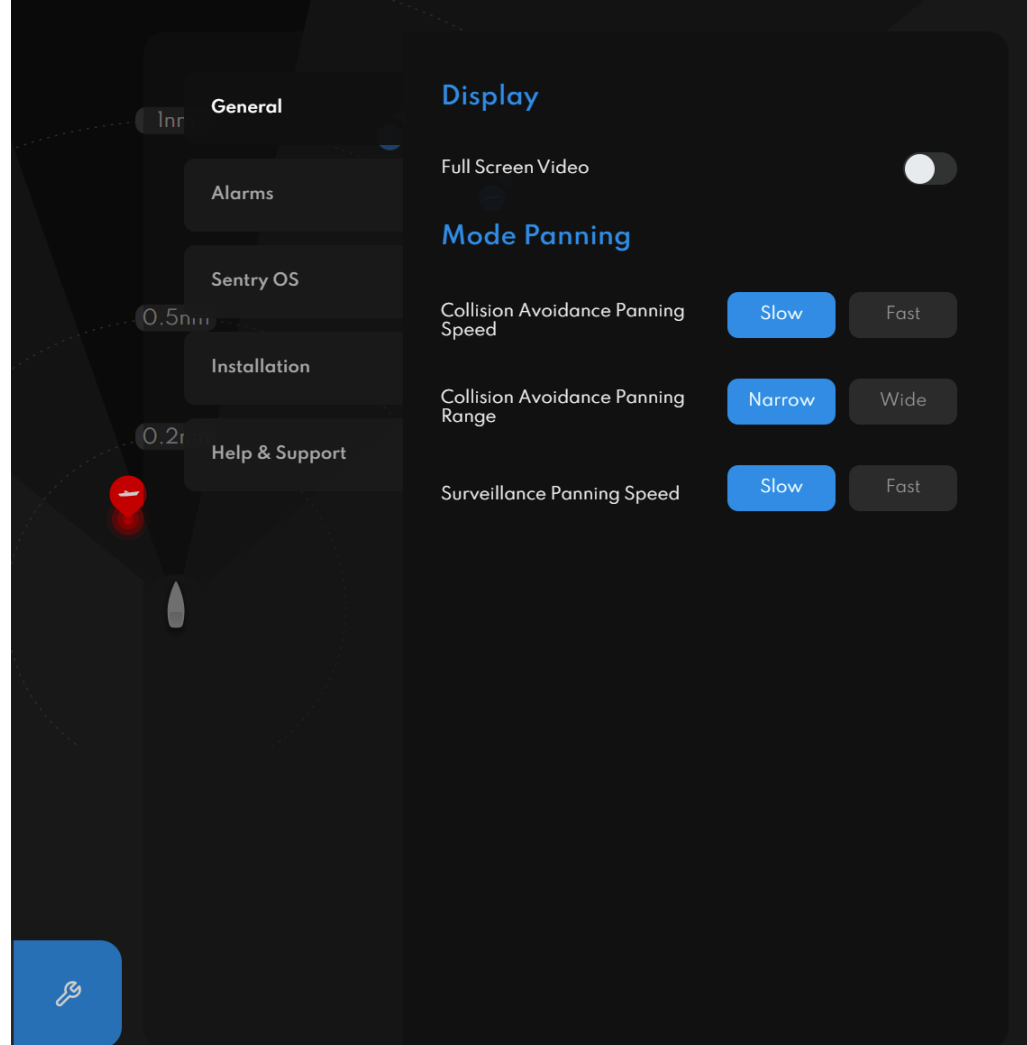
Selected target

realtime sector of camera FOV

General Settings

In the general Sentry settings, panning speed and panning sector can be selected for the Collision Avoidance mode and the rotation speed can be chosen for the Surveillance mode.

Note: Fast panning speed is usefull in congested areas but is reduces the detection range.

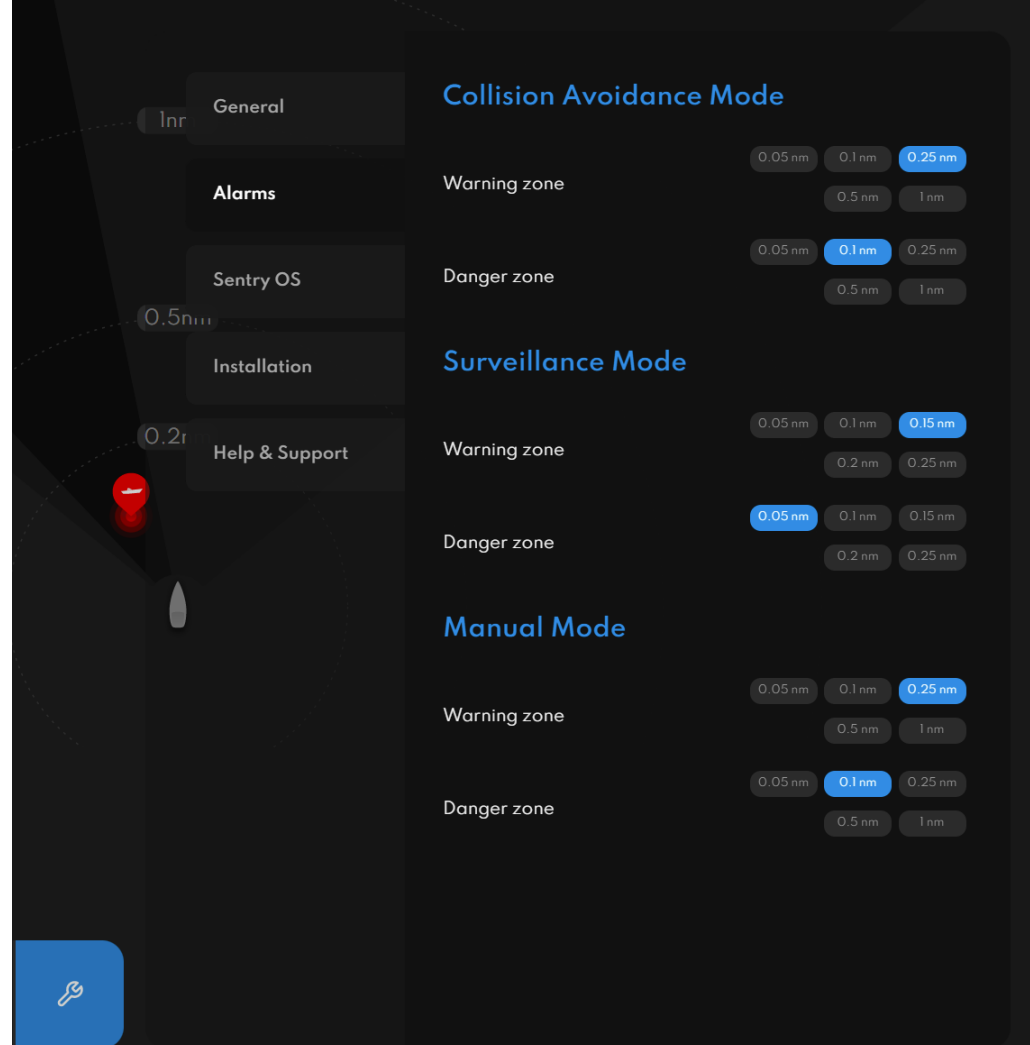


Alarm Settings

To configure the alarms for every mode, different warning and danger zones can be selected.

Note:

Warning zone = yellow alarm
Danger zone = red alarm



Update Sentry

Attention:

Keep your system always up-to-date to ensure your system is running stable and with the best performance.

How to update:

Go to settings – Sentry OS – select the latest update package (.oscar file) and press Update System.

Note:

Download link for the Update package will be sent to the registered e-mail address. If a new update is available.

General

Alarms

Sentry OS

Installation

Help & Support

About

Sentry OS

Version 1.0

Last updated: Jul 11, 2022

System Update

Update Sentry to the current version by uploading an update file.

Select File

Update System

Questions?
Need Support?

Contact your local dealer

or

write to

service@bsb-marine.com

or

www.oscar-navigation.com/contact/

BSB Artificial Intelligence GmbH
Siemensstrasse 60
4030 Linz
AUSTRIA

BSB Marine SAS
Port La Forêt
29940 La Forêt Fouesnant
FRANCE

BSB Portugal Lda
Rua António Champalimaud
Lote 1 Piso 1, Sala 1.13B,
1600-514 Lisbon
PORTUGAL

BSB Marine, Inc.
407 Lincoln Road, Suite 10 F
Miami Beach, FL 33139 USA